



Maresfield Gardens | London | NW3

£750 Per Week |

 2  2  1  D

ADN
RESIDENTIAL

A modern and well proportioned two double bedroom apartment arranged over the garden level of a grand period conversion located on Maresfield Garden NW3. This wonderful property benefits from having wooden flooring throughout and comprises, spacious reception room with French doors leading directly onto the communal gardens and a semi open plan kitchen, principal bedroom with en-suite shower room, second double bedroom with built in storage and a family bathroom. Maresfield Gardens is ideally located 0.6m for the amenities and transport facilities of Hampstead Village and also Finchley Road and Swiss Cottage.

-
- 2 Double Bedrooms
 - Direct Access To Communal Gardens
 - Semi Open Plan Kitchen
 - 2 Bathrooms
 - Wooden Flooring
 - Desirable Tree Lined Road
-

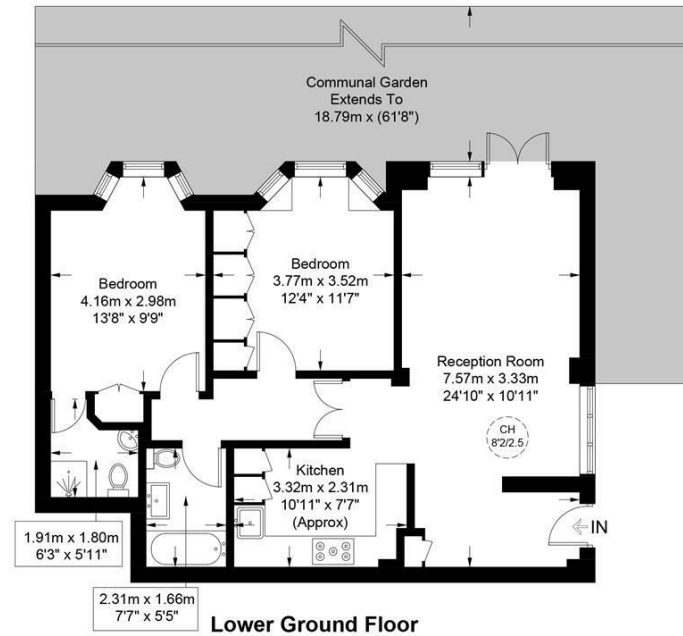
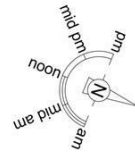
Council Tax Band: F
EPC: C







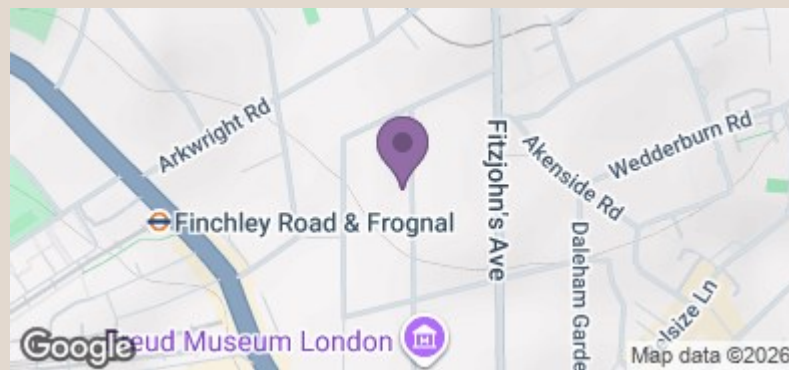
Approximate Gross Internal Area = 781 sq ft / 72.6 sq m



This plan is for layout guidance only and is not drawn to scale unless stated. All dimensions, including windows, doors, and the Total Gross Internal Area (GIA), are approximate. For precise measurements, please consult a qualified architect or surveyor before making any decisions based on this plan.



**Certified
Property
Measurer**



Energy Efficiency Rating		Current	Potential
<p><i>Very energy efficient - lower running costs</i></p> <p>(92 plus) A</p> <p>(81-91) B</p> <p>(69-80) C</p> <p>(55-68) D</p> <p>(39-54) E</p> <p>(21-38) F</p> <p>(1-20) G</p>		63	77
<p><i>Not energy efficient - higher running costs</i></p>			

England & Wales

EU Directive 2002/91/EC

